

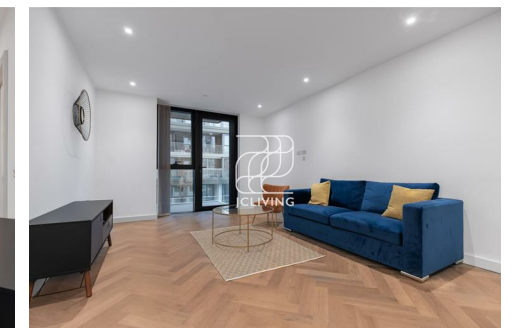
Directions

Viewings

Viewings by arrangement only. Call 02033696888 to make an appointment.

EPC Rating

Energy Efficiency Rating		Current	Potential
Very energy efficient - lower running costs			
(92 plus) A			
(81-91) B			
(69-80) C			
(55-68) D			
(39-54) E			
(21-38) F			
(1-20) G			
Not energy efficient - higher running costs			
England & Wales		EU Directive 2002/91/EC	



ML08, Flat 504, 23 Gauging Square,, London, E1W 2AW

£3,050 Per Month

23 Gauging Square,, E1W 2AW

JCLiving is proud to present this stylish one-bedroom apartment at London Dock, 23 Gauging Square, Wapping, E1W.

Situated in the heart of Wapping, this contemporary home is part of the prestigious London Dock development by Berkeley Group. Spanning 7.5 acres of beautifully landscaped open space, the development offers an exceptional blend of historic charm and modern city living. Tower Bridge, the Tower of London, and St Katharine Docks are all within easy walking distance, while the City of London and Canary Wharf are just minutes away via nearby Zone 1 transport links including Tower Hill and Wapping stations.

The apartment itself is thoughtfully designed with high-quality finishes. A bright open-plan reception area connects seamlessly to a bespoke kitchen equipped with integrated appliances, while the bedroom provides a tranquil retreat. Residents also enjoy exclusive access to world-class amenities, including a 24-hour concierge, state-of-the-art gym, swimming pool, spa, private cinema, and landscaped communal gardens.

Available to move in from 7th July. Early viewings are highly recommended. Please quote reference JC24071552 when contacting the office.



Council Tax Band:

